

Day of the Dead Nicho (mini shrine) Template

Nichos are 'shadow box' style frames that are often featured on Day of the Dead *ofrendas* or hanging in the home. They are traditionally made of tin or wood and decorated with sequins, glitter and beads. Usually featuring a key object or central figure for whose honor or memory the *nicho* has been created. This *nicho* craft activity is an introduction to some of the crafts used in the Mexican Day of the Dead.



Step 1

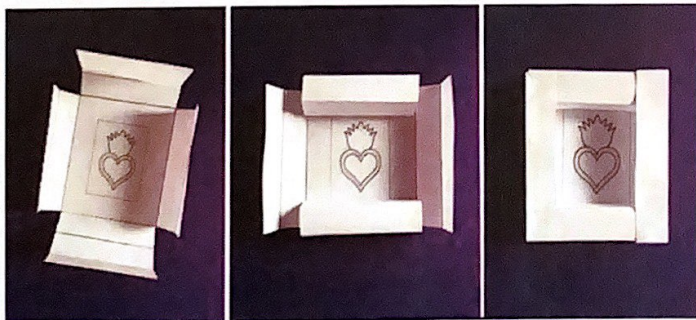
Print the templates onto a light card stock, color in the frames with bright colors and the central image (or stick another image of your choice) then cut out the outer outline of the shadow box.

Step 2

Fold all the dotted lines, glue the box frame

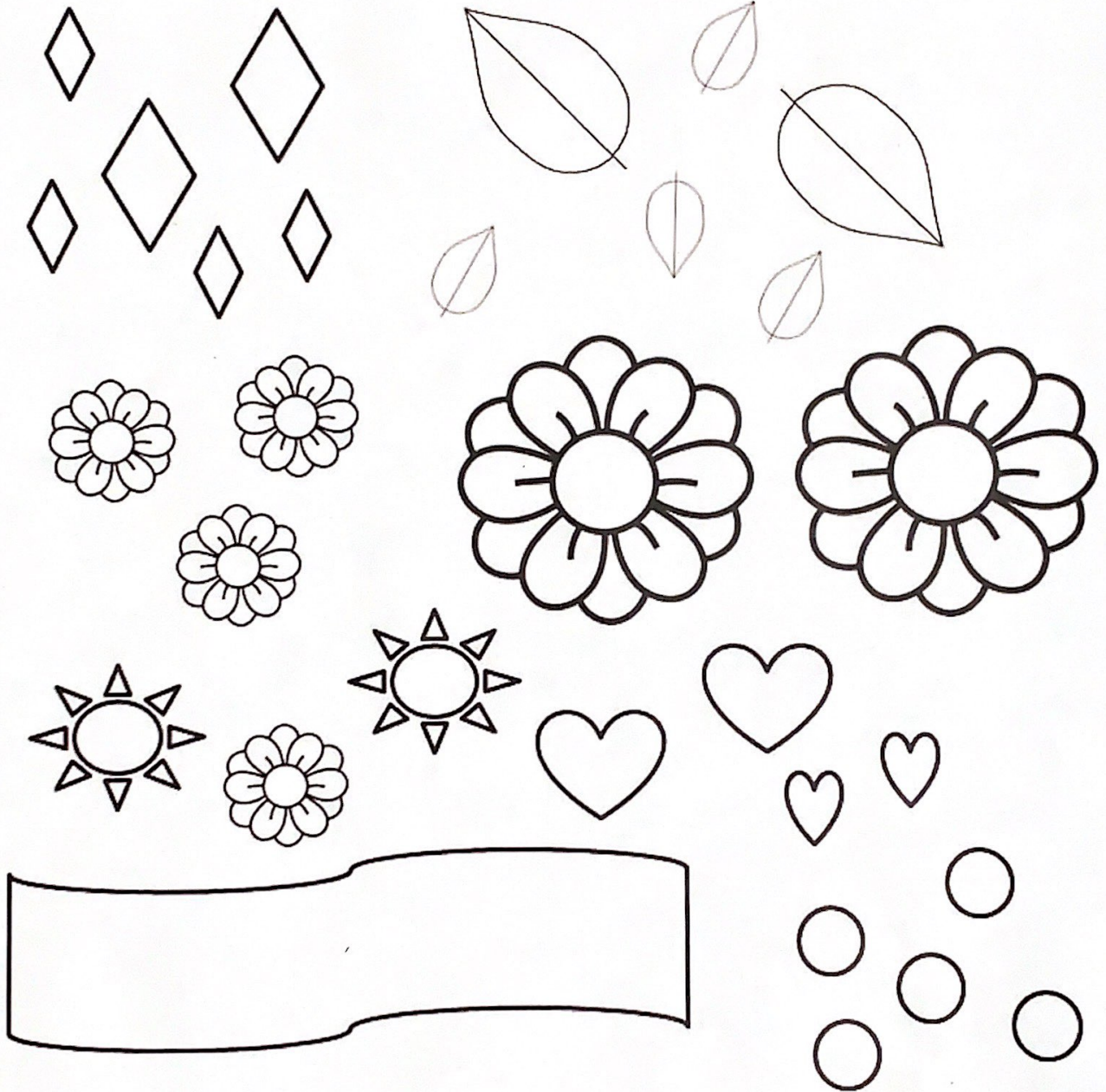
Step 3

Continue decorating your *nicho*! You can add sequins, gems, and also add 3D objects like paper or plastic flowers, mini figures or trinkets.

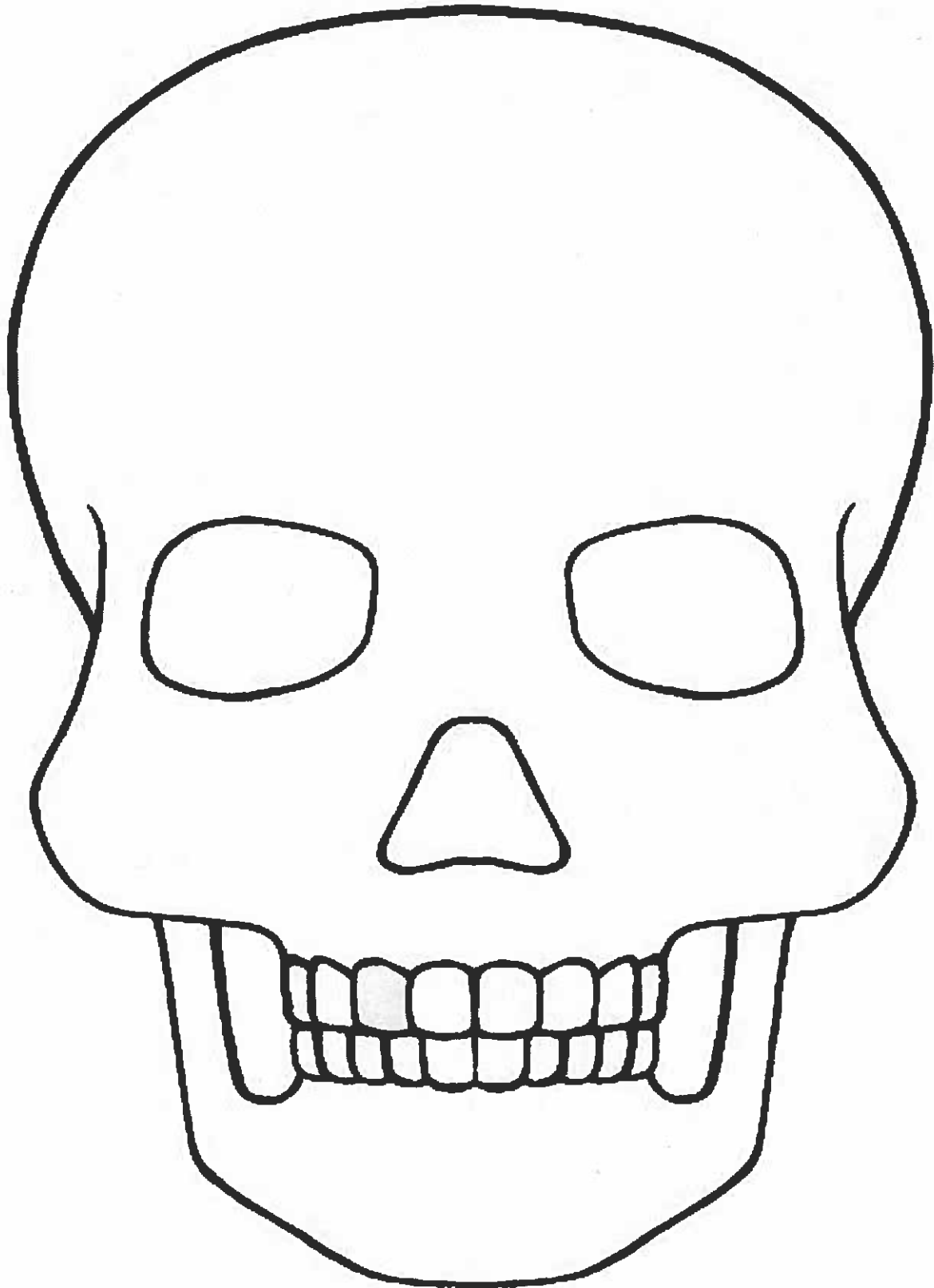


Design Your Own Sugar Skull

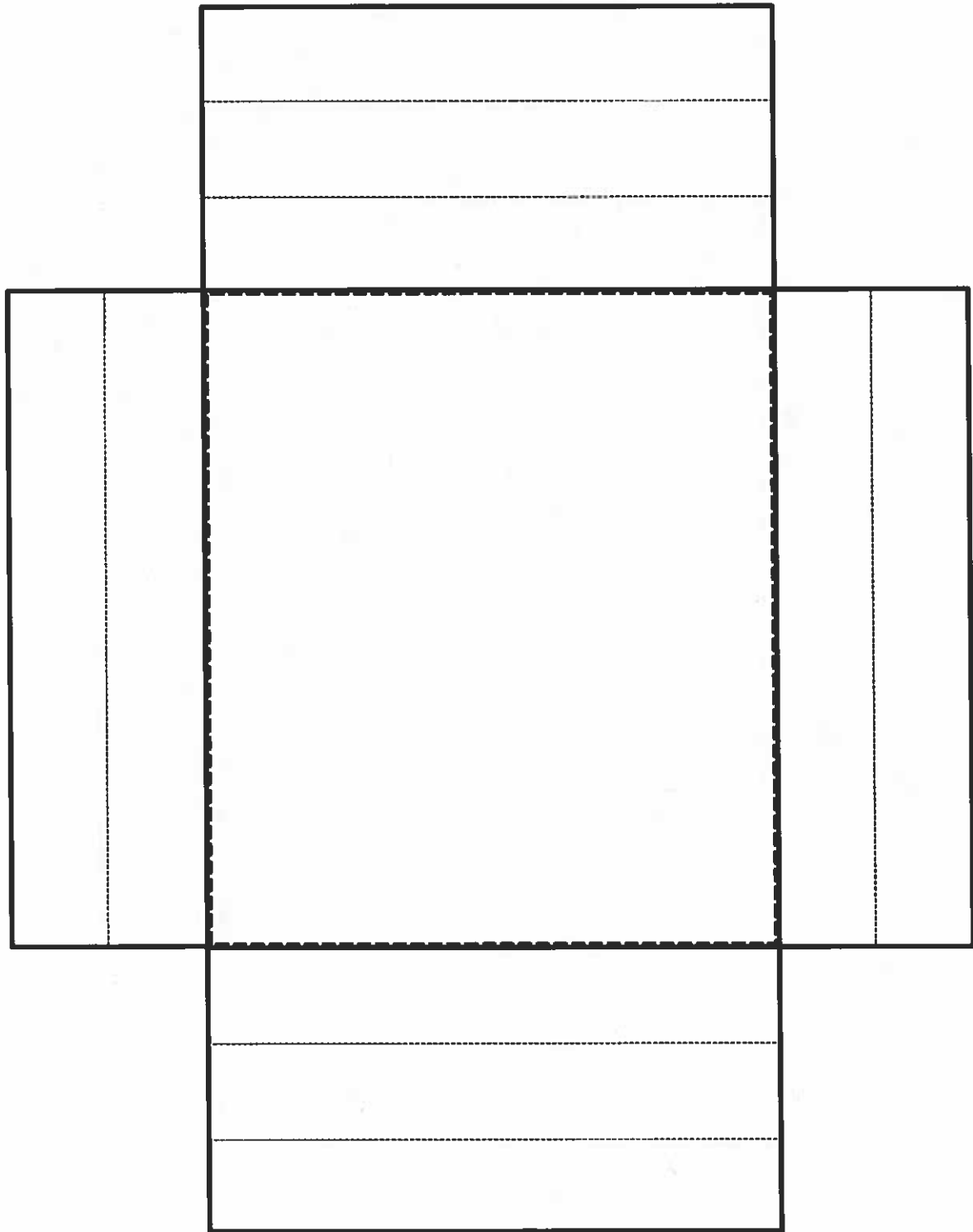
Use the symbols below to decorate your skull. Remember to dedicate it to someone special!



Design Your Own Sugar Skull



Day of the Dead Nicho (mini shrine) Template



Day of the Dead Nicho (mini shrine) Template

